



MAKING YOUR DREAMS A REALITY

FITTING INSTRUCTIONS

EXMS-0017 Set, Stay, Exhaust Guard, Monkey 125



Fitting Instructions: EXMS-0017 Set, Stay, Exhaust Guard, Monkey 125

This stay set is used to install the quality stock Honda exhaust guard on our Maggot system EXPS-0104.

We recommend a two stage installation.

First we'll be fitting the various parts loosely onto the final section (EXPT-0075) of the exhaust system. And secondly, finalizing and securing everything into the correct position once the exhaust system is assembled on the bike.

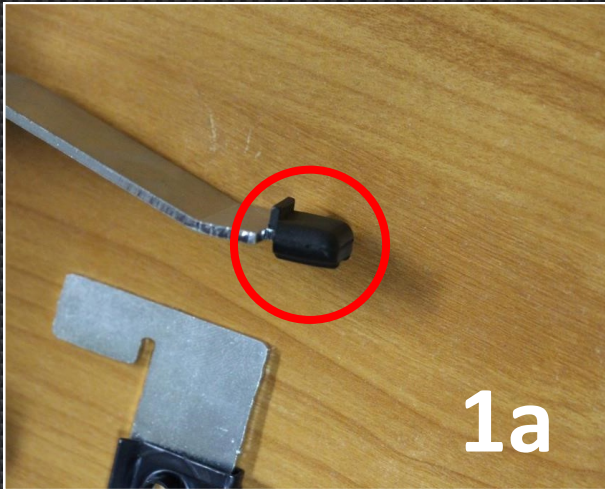


Before starting, you'll need the following OEM Monkey parts: Exhaust Guard, fitted with grommet and bolt. And the three anti vibe rubbers from the OEM exhaust.

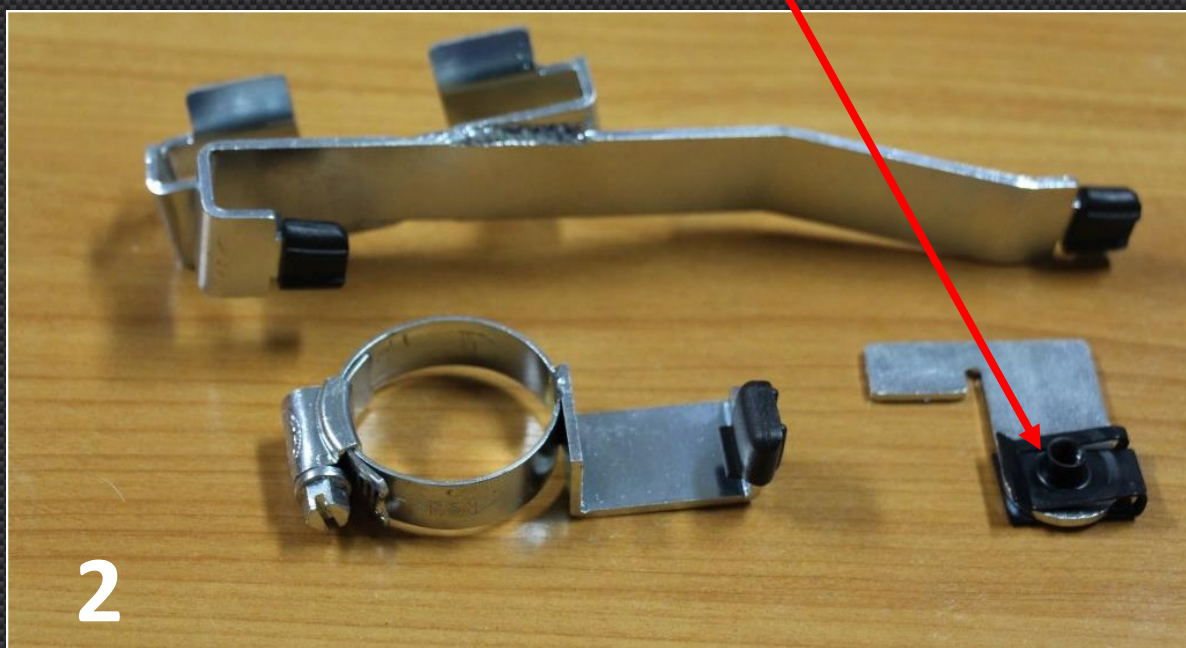


On the bench:

1) Fit the 3 OEM anti vibe rubbers onto the EXMS-0017 stays



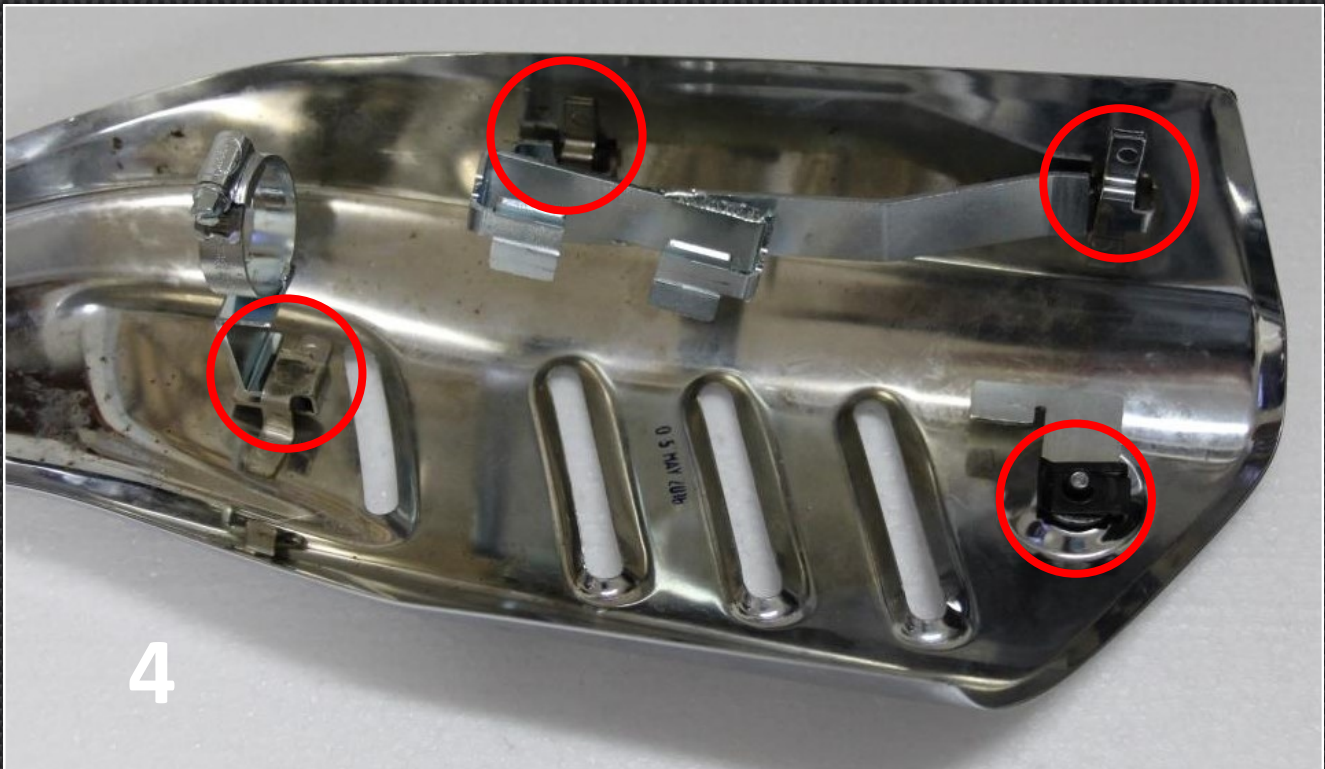
2) Check all parts are in order and the M6 clip is fitted correctly.



3) Slide the hose clamps into position on EXPT-0075 Do not tighten.

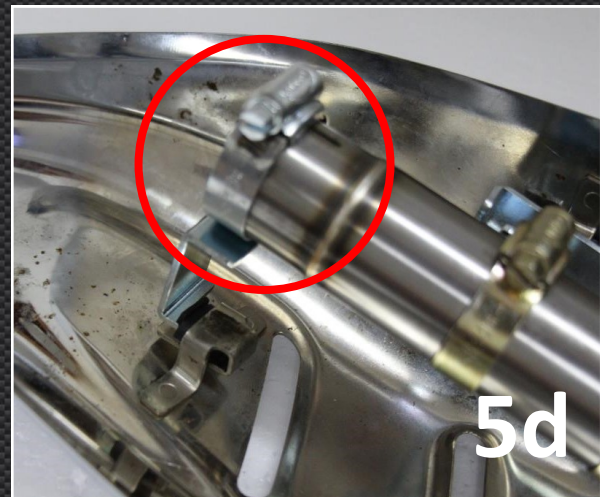
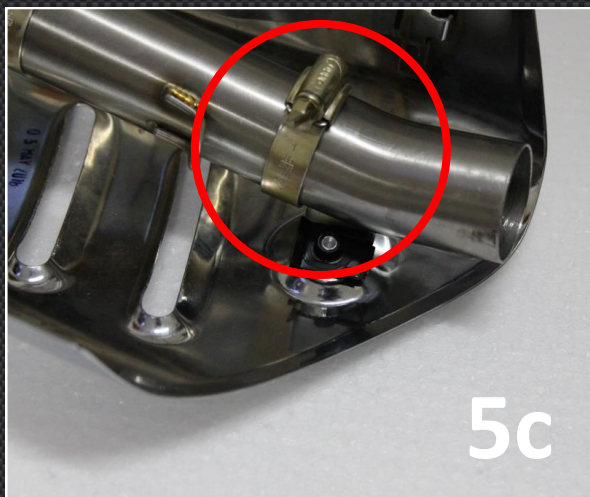
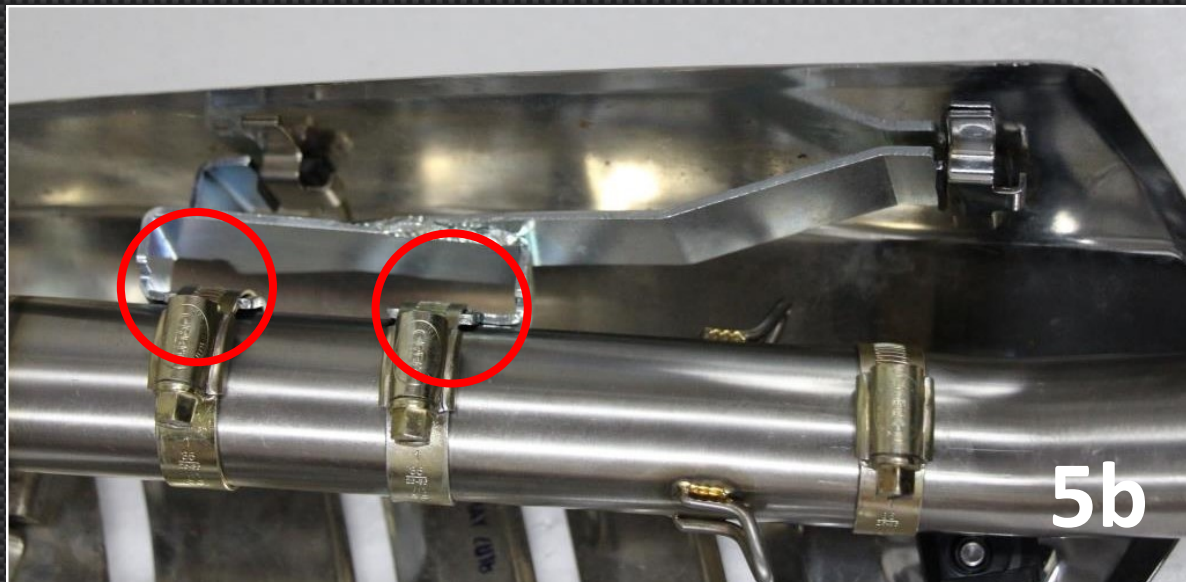


4) The final stay can be secured to the guard using the OEM bolt. The initial and middle clamps can also be fitted to the guard as shown



www.tyga-performance.com

5) Now offer up the pipe final section (EXPT-0075) to the stays and slide into position. Hook the tabs of the stays under the clamps. Secure the clamps lightly. We will need to adjust the position later so do not over tighten at this stage.



On the bike:

1) Presuming that header EXPT-0074 is already fitted to the bike, we can slip EXPT-0075 including the guard onto the header, and also the Maggot can be fitted and retained with springs. Note that the manifold clamp has been left loose to allow the pipe to be swung in and out of position. This makes for reasonably simply setup and securing of the guard and clamps.



2) The guard should be adjusted on small increments, and the final section EXPT-0075 can also be adjusted slightly to allow the guard to settle into the perfect position. Other than by way of the rubber components, the guard should not interfere with the exhaust pipe, or the bike in any way. See pictures below for reference



3) Firmly secure the clamps and recheck the position.

4) Finally, secure the manifold clamp and the Maggot stay.



Job Done !!



Monkey

www.jap4performance.com