



**MAKING YOUR DREAMS A REALITY**

**FITTING INSTRUCTIONS**

**Turn Signals, RC30 Style**



**For that authentic RC30 look, we have put together a set of OEM turn signals combined with our own designed 3D printed parts to replicate the style of the RC30 turn signals.**

The front turn signals fit in exactly the same way as the regular Honda OEM turn signals. Just offer up the BPSY-0380 rubber and push the grommet through the main large hole. Fit the BPSY-0382 Bush from the inside. Thread the turn signal wires through the hole in the rubber and pull through until the turn signal locates. Fit the M4x35 machine screw from the inside and tighten. Repeat on the other side.

Note that the rubbers (like the OEM rubbers) are not handed. They are the same left and right .

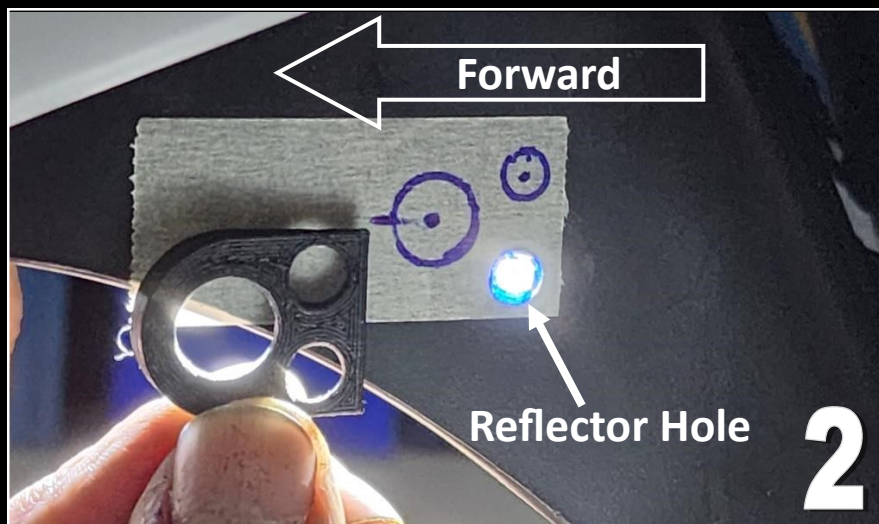


The rear turn signals are a little more involved, so we will go through this step by step.

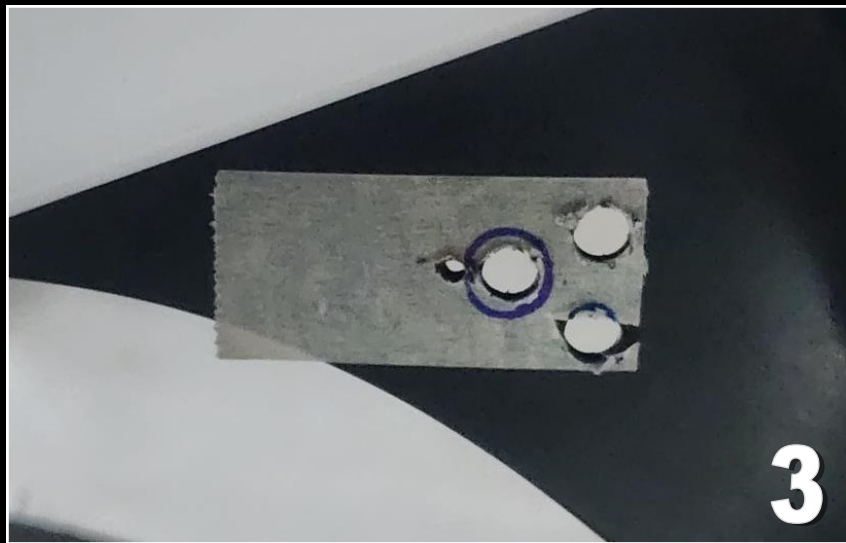
**1)** First, remove the side reflectors from the rear of the undertray. We will use this mounting hole as our start point.

**2)** Put some tape over and around the reflector mounting hole as we will need to do some marking out. Then offer up the BPSY-0379B locking plate, using the reflector hole as the starting point and mark out the holes.

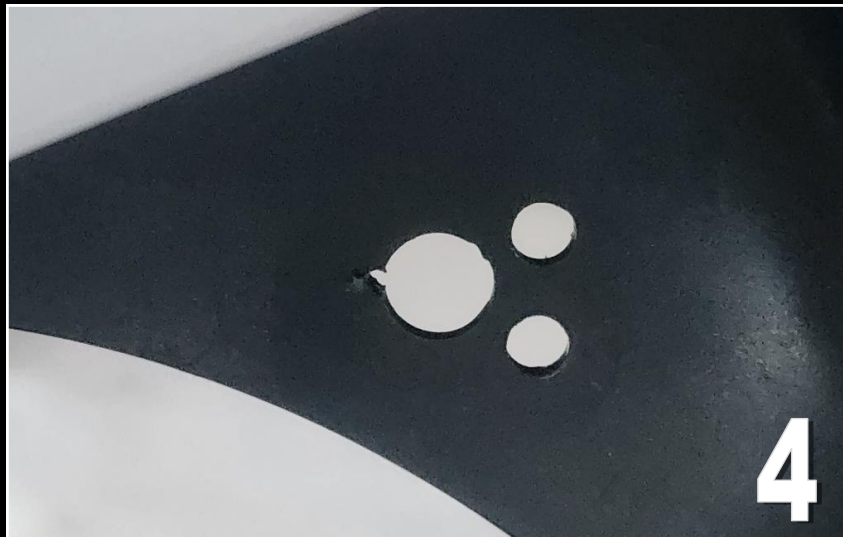
Shown below is the left hand side marked and ready for the next step. Make sure that the two smaller circles are on a vertical line so that the turn signal is in the correct position when finally fitted. And most importantly, make sure that the reflector mount hole is on the bottom on both left and right sides of the bike to ensure that the turn signals are at the same height.



**3)** Drill a 5mm. hole at the front side of the large circle This will be for location. And drill the other two holes 7mm.



**4)** Finally, open out the large circle to 12mm. and you should have something like this:



**5)** Now fit BPSY-0379A rubber by pushing the grommet through the 12mm. hole. Just like on the front turn signals.



And view from the inside



**6)** The next part is a little tricky. You need to fit BPSY-0379B locking plate over the grommet. Offer the plate up at 90 degrees as shown.



And then turn the locking plate 90 degrees to the correct position.



**7)** Now we can thread the turn signal wiring through the hole. Start by offsetting the bullet connectors a little as this will allow easier entry.



Once through, pull the wiring through all the way.

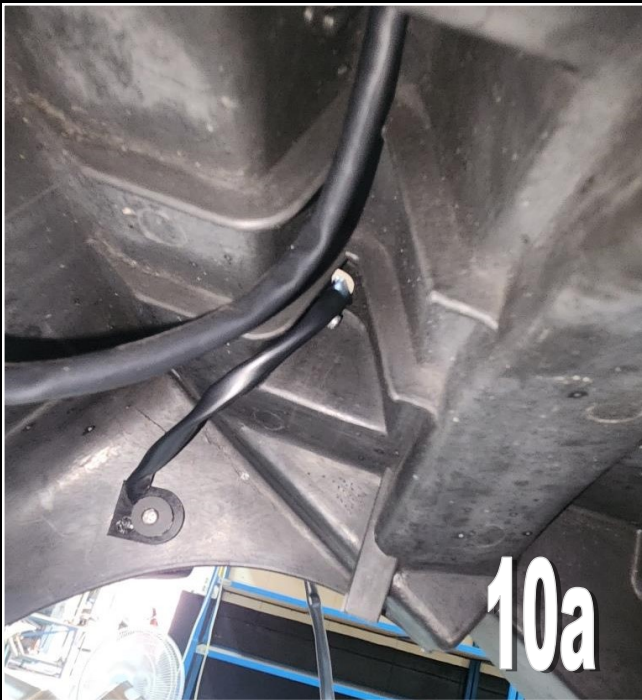


**8)** Fit the BPSY-0382 Bush, followed by the M4x35 machine screw and tighten into the turn signal body.

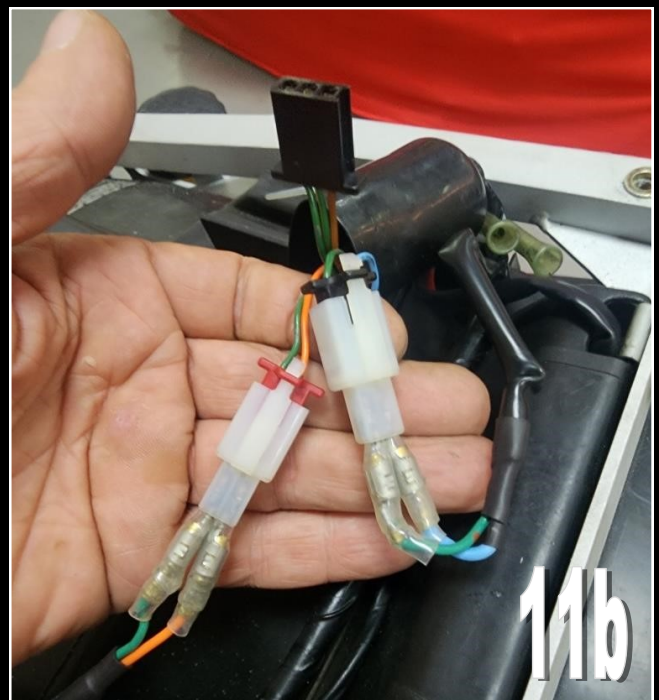
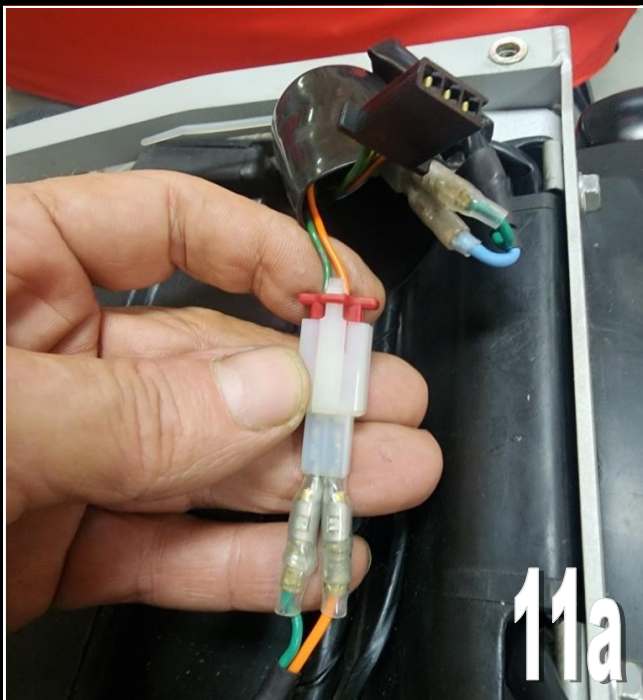


**9)** Now you can repeat with the other turn signal.

**10)** Route the turn signal wires up through the holes in the undertray where it attaches to the subframe.



**11)** Now, using our TELC-0007 Terminal Adapter, 2P To Female Bullet, connect the turn signals to the main harness.



Tuck the wiring away neatly and securely.

**12)** Before replacing any bodywork it is advisable to check that the turn signals all function correctly.

**13)** All done. Step back and enjoy the view!



[www.jap4performance.com](http://www.jap4performance.com)