

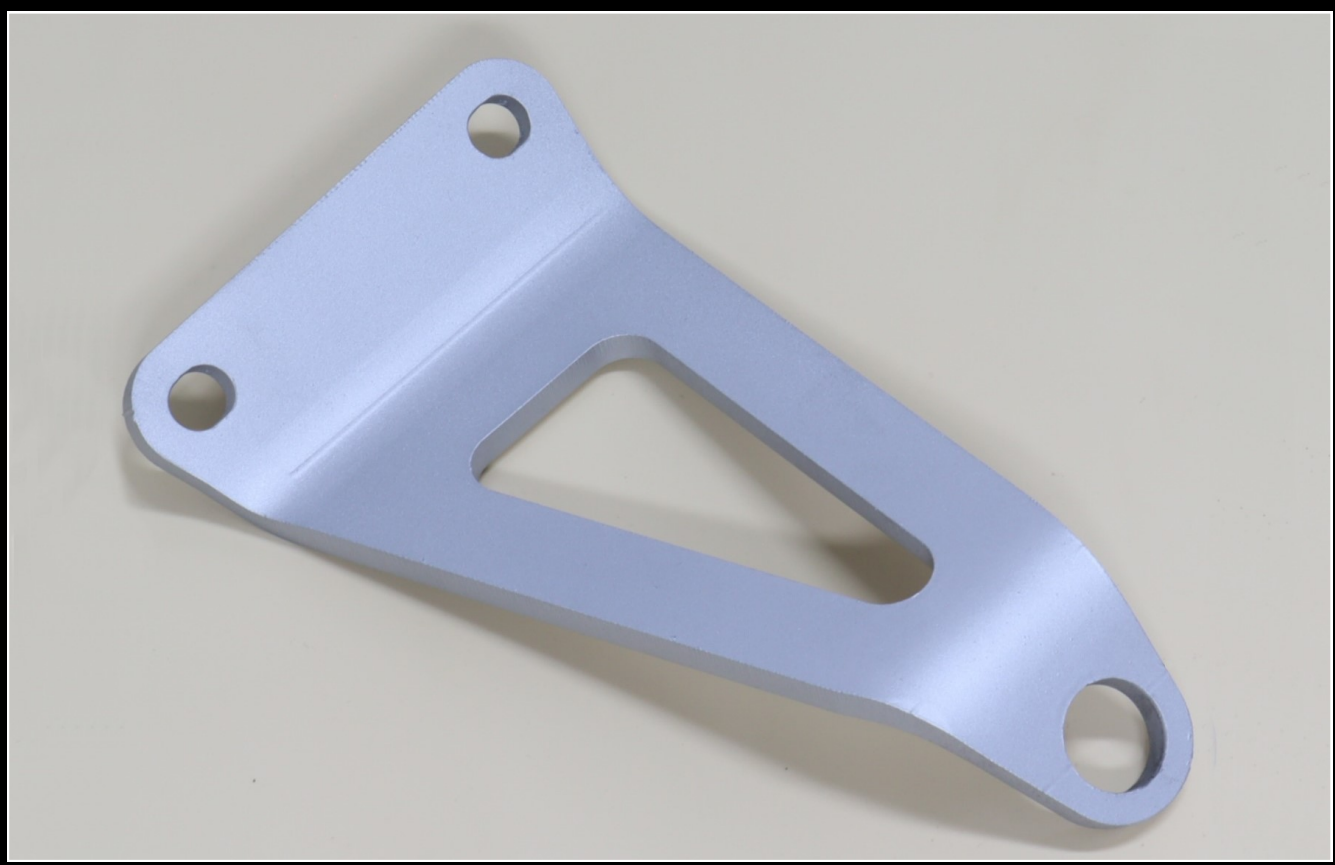


MAKING YOUR DREAMS A REALITY

## FITTING INSTRUCTIONS

### Cutting Template for TYLY-0313

### Exhaust Stay, RC36-2, RC30 Style



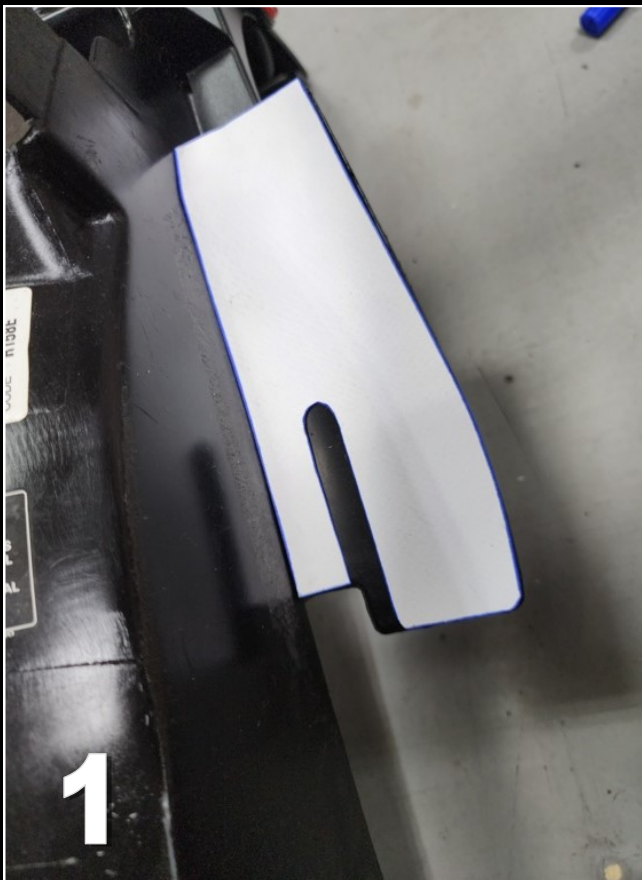
# Cutting Template for TYLY-0313 Exhaust Stay, RC36-2, RC30 Style

In order to fit the TYLY-0313 Exhaust Stay to the TYGA TYLY-0314 subframe, it is necessary to trim a slot out of the left rear “wing” of the undertray. We have a simple template for this job.

Tools required are a 10mm drill bit (not supplied) a saw blade and a regular electric/ battery drill.

## Please follow the instructions below

- 1) The first plan is to slide the template into position so that it is touching the upright wall of the under tray and level with the front edge of the wing.
- 2) With the template in position, use a pen and mark the cut-out area. This will be removed to make clearance for the silencer stay.



**3)** Remove the paper template and reveal the pen marking.



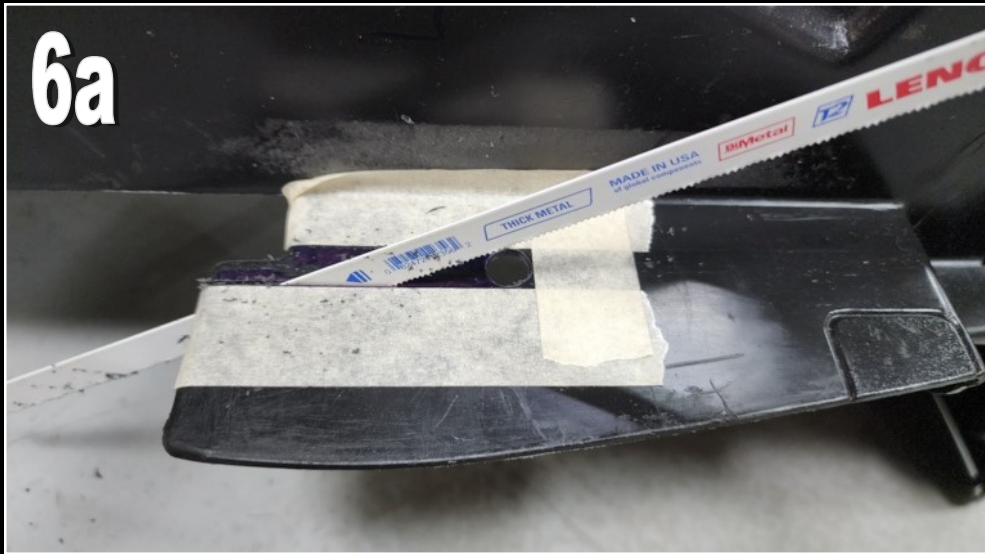
**4)** Now, lay some masking tape around the outside of the pen marking. Check that it's straight and parallel with the side wall of the under tray, and that the cut-out is parallel.



**5)** Start by drilling a 10mm hole as shown. This saves a little time trying to clean things up at the end.



**6)** Next job is to cut up against the tape, up to the drilled hole. I used a simple 18T saw blade for this with slow careful strokes.



**7)** Clean up the rough edges with some abrasive paper, and job done!

